

Remaining Hazardous Areas in South Sudan as of 28 February 2025



Situation Mapped by
Number of Clearance Tasks per Payam

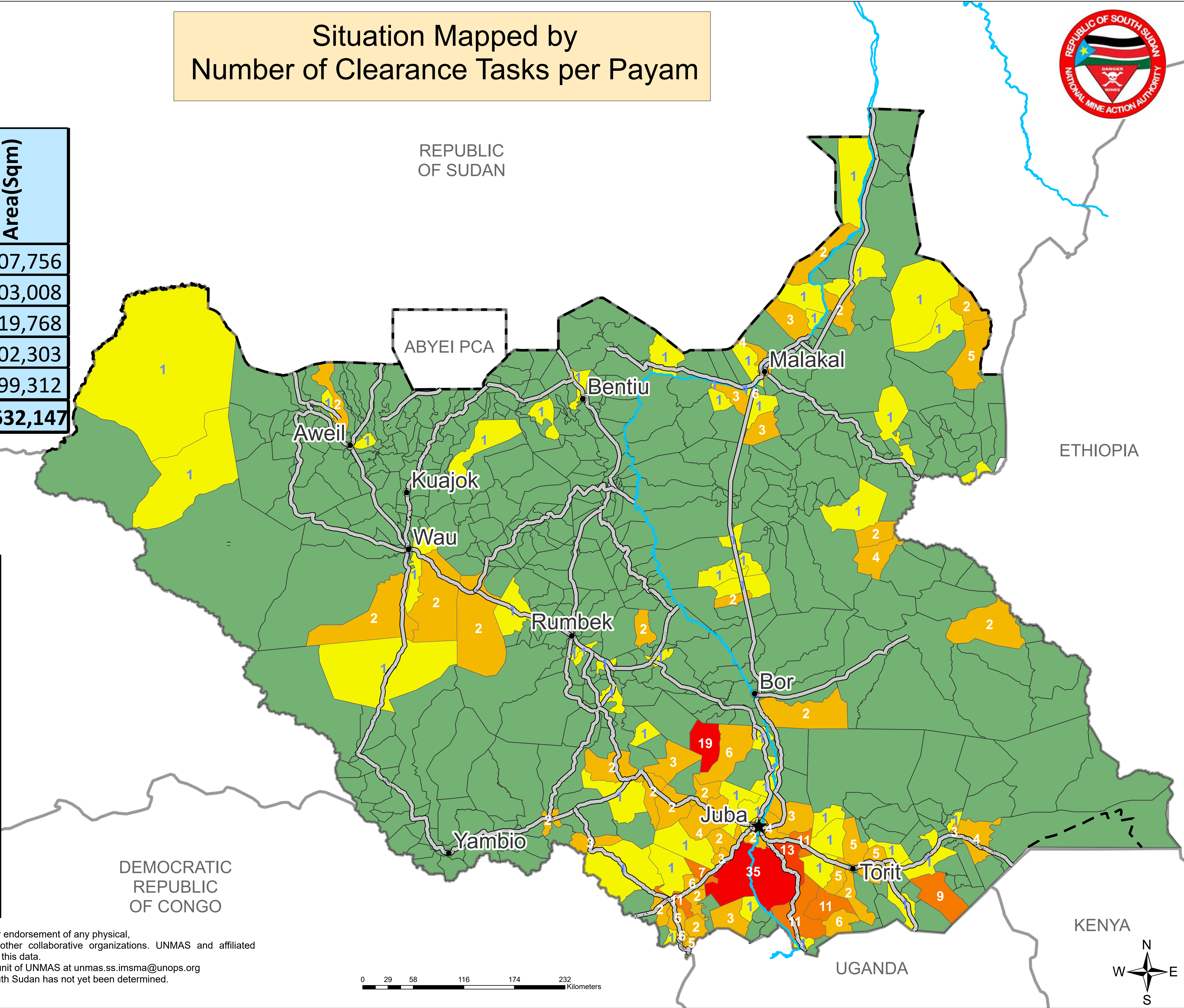


Open Hazard	# of Hazard	Area(Sqm)
AP Mines	113	4,707,756
AT Mines	51	2,303,008
Mined Road	26	3,919,768
Cluster Munitions	106	9,302,303
Battlefield	38	1,399,312
Total	334	21,632,147

LEGEND

- Country Capital
- State Capital
- River Nile
- Major Roads
- Undetermined Boundary
- International Boundaries South Sudan

# of Clearance Task	Payam	%
1	54	10.6
2 - 6	48	9.4
7 - 11	6	1.2
12 - 16	2	0.4
Above 16	1	0.2
No Known Hazards	414	78.9



The information shown on this map does not imply official recognition or endorsement of any physical, political boundaries or featured names by the United Nations or other collaborative organizations. UNMAS and affiliated organizations are not liable for damage of any kind related to the use of this data.
Users who notice errors or omissions are encouraged to inform the IM unit of UNMAS at unmas.ss.imsma@unops.org
Final boundary between the Republic of Sudan and the Republic of South Sudan has not yet been determined.
Final status of the Abyei area is not yet determined.

Remaining Hazardous Areas in South Sudan as of 28 February 2025



Situation Mapped by
Total Contaminated Area per Payam

Open Hazard	# of Hazard	Area(Sqm)
AP Mines	113	4,707,756
AT Mines	51	2,303,008
Mined Road	26	3,919,768
Cluster Munitions	106	9,302,303
Battlefield	38	1,399,312
Total	334	21,632,147

LEGEND		
	Country Capital	
	State Capital	
	River Nile	
	Major Roads	
	Undetermined Boundary	
	International Boundaries South Sudan	
Total Contaminated Area	Payam	%
Above 3,000,000 Sqm	0	0
1,000,000 - 3,000,000	2	0.4
500,000 - 1,000,000	10	1.9
100,000 - 500,000	39	7.4
Up to 100,000 Sqm	60	11.4
No Known Hazards	414	78.9

The information shown on this map does not imply official recognition or endorsement of any physical, political boundaries or featured names by the United Nations or other collaborative organizations. UNMAS and affiliated organizations are not liable for damage of any kind related to the use of this data. Users who notice errors or omissions are encouraged to inform the IM unit of UNMAS at unmas.ss.imsma@unops.org Final boundary between the Republic of Sudan and the Republic of South Sudan has not yet been determined. Final status of the Abyei area is not yet determined.

