

Remaining Hazardous Areas in South Sudan as of 31 May 2025



Situation Mapped by
Number of Clearance Tasks per Payam



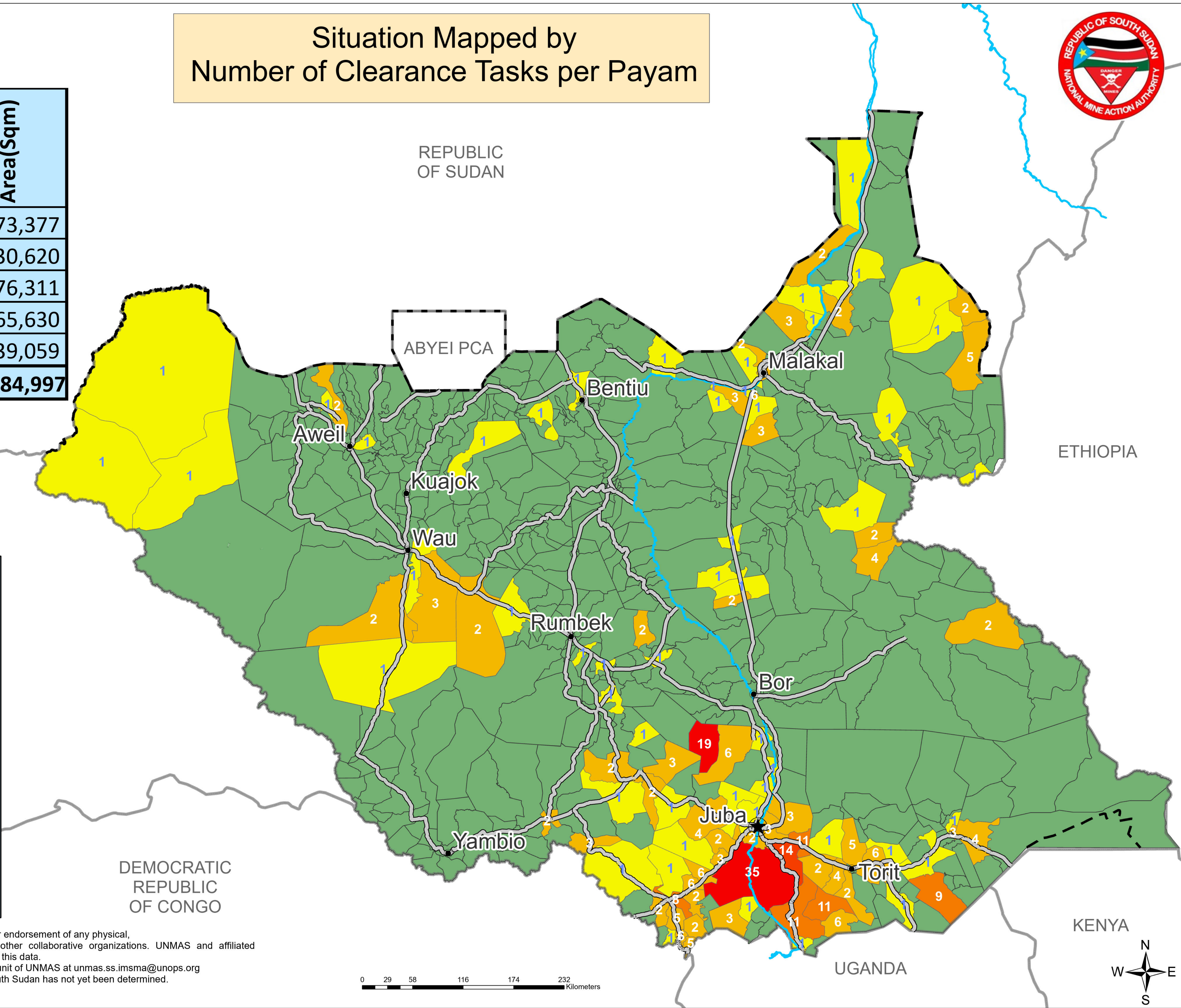
| Open Hazard | # of Hazard | Area(Sqm) |
|-------------------|-------------|------------|
| AP Mines | 111 | 4,673,377 |
| AT Mines | 52 | 2,330,620 |
| Mined Road | 25 | 3,276,311 |
| Cluster Munitions | 102 | 9,165,630 |
| Battlefield | 33 | 1,239,059 |
| Total | 323 | 20,684,997 |

LEGEND

- Country Capital
- State Capital
- River Nile
- Major Roads
- Undetermined Boundary
- International Boundaries South Sudan

| # of Task | Payam | % |
|------------------|-------|------|
| 1 | 52 | 9.9 |
| 2 - 6 | 46 | 8.8 |
| 7 - 11 | 5 | 1.0 |
| 12 - 16 | 1 | 0.2 |
| Above 16 | 2 | 0.4 |
| No Known Hazards | 419 | 79.8 |

The information shown on this map does not imply official recognition or endorsement of any physical, political boundaries or featured names by the United Nations or other collaborative organizations. UNMAS and affiliated organizations are not liable for damage of any kind related to the use of this data. Users who notice errors or omissions are encouraged to inform the IM unit of UNMAS at unmas.ss.imsma@unops.org Final boundary between the Republic of Sudan and the Republic of South Sudan has not yet been determined. Final status of the Abyei area is not yet determined.



Remaining Hazardous Areas in South Sudan as of 31 May 2025



| Open Hazard | # of Hazard | Area(Sqm) |
|-------------------|-------------|------------|
| AP Mines | 111 | 4,673,377 |
| AT Mines | 52 | 2,330,620 |
| Mined Road | 25 | 3,276,311 |
| Cluster Munitions | 102 | 9,165,630 |
| Battlefield | 33 | 1,239,059 |
| Total | 323 | 20,684,997 |

Situation Mapped by
Total Contaminated Area per Payam



| LEGEND | | |
|-------------------------|--------------------------------------|------|
| | Country Capital | |
| | State Capital | |
| | River Nile | |
| | Major Roads | |
| | Undetermined Boundary | |
| | International Boundaries South Sudan | |
| Total Contaminated Area | Payam | % |
| Above 3,000,000 Sqm | 0 | 0.0 |
| 1,000,000 - 3,000,000 | 2 | 0.4 |
| 500,000 - 1,000,000 | 9 | 1.7 |
| 100,000 - 500,000 | 37 | 7.0 |
| Up to 100,000 Sqm | 55 | 10.5 |
| No Known Hazards | 422 | 80.4 |

The information shown on this map does not imply official recognition or endorsement of any physical, political boundaries or featured names by the United Nations or other collaborative organizations. UNMAS and affiliated organizations are not liable for damage of any kind related to the use of this data. Users who notice errors or omissions are encouraged to inform the IM unit of UNMAS at unmas.ss.imsma@unops.org. Final boundary between the Republic of Sudan and the Republic of South Sudan has not yet been determined. Final status of the Abyei area is not yet determined.

