



Assisting Survivors Through Partnerships:

A look at the example of Myanmar

A snap shot of the threat

Current information gaps

Servicing Victims through
Partnership

Integrated Protection Support

Coordination with other actors

Challenges ahead



What information do we currently have?

A snap shot of the threat

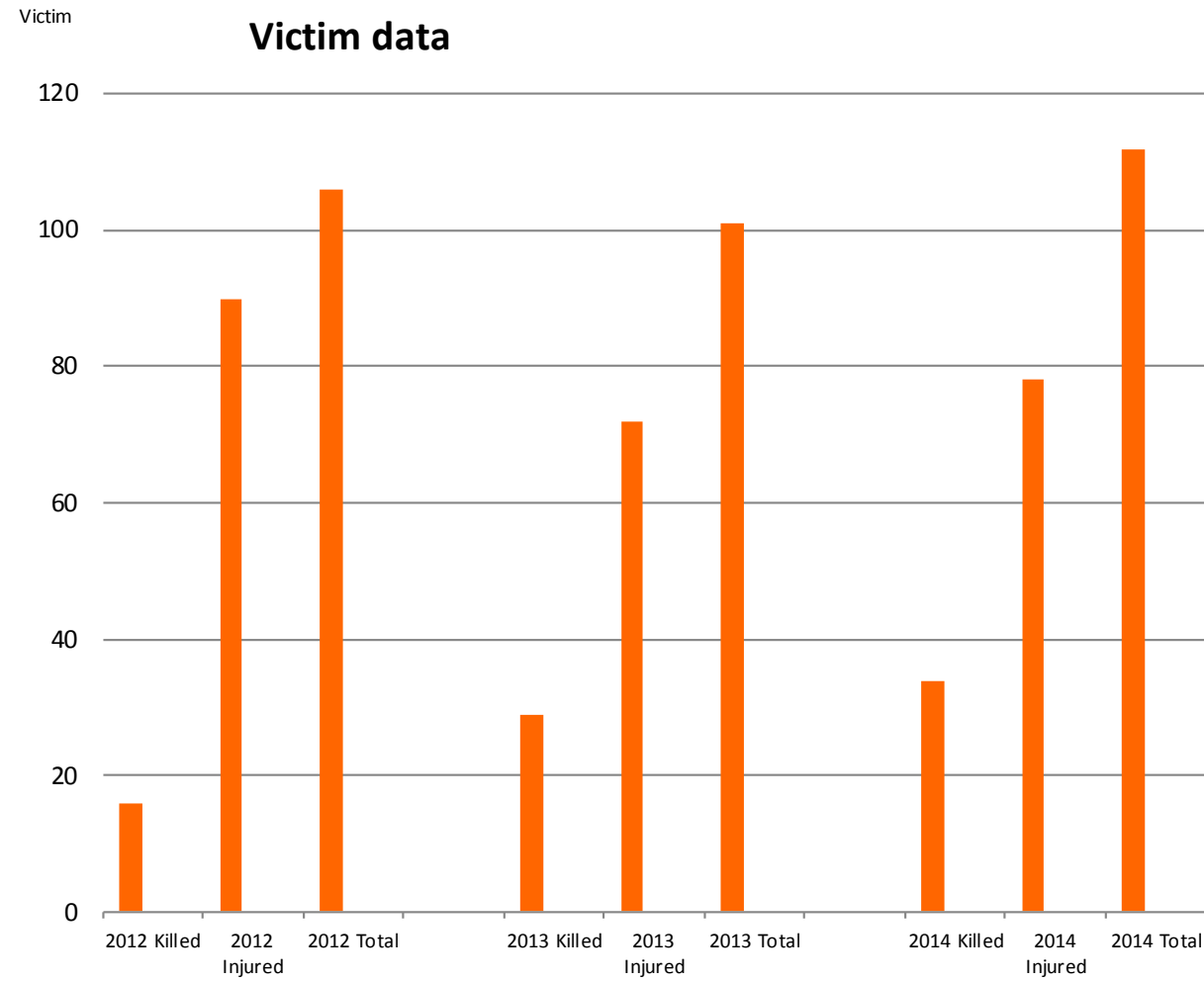
Current information gaps

Servicing Victims through
Partnership

Integrated Protection Support

Coordination with other actors

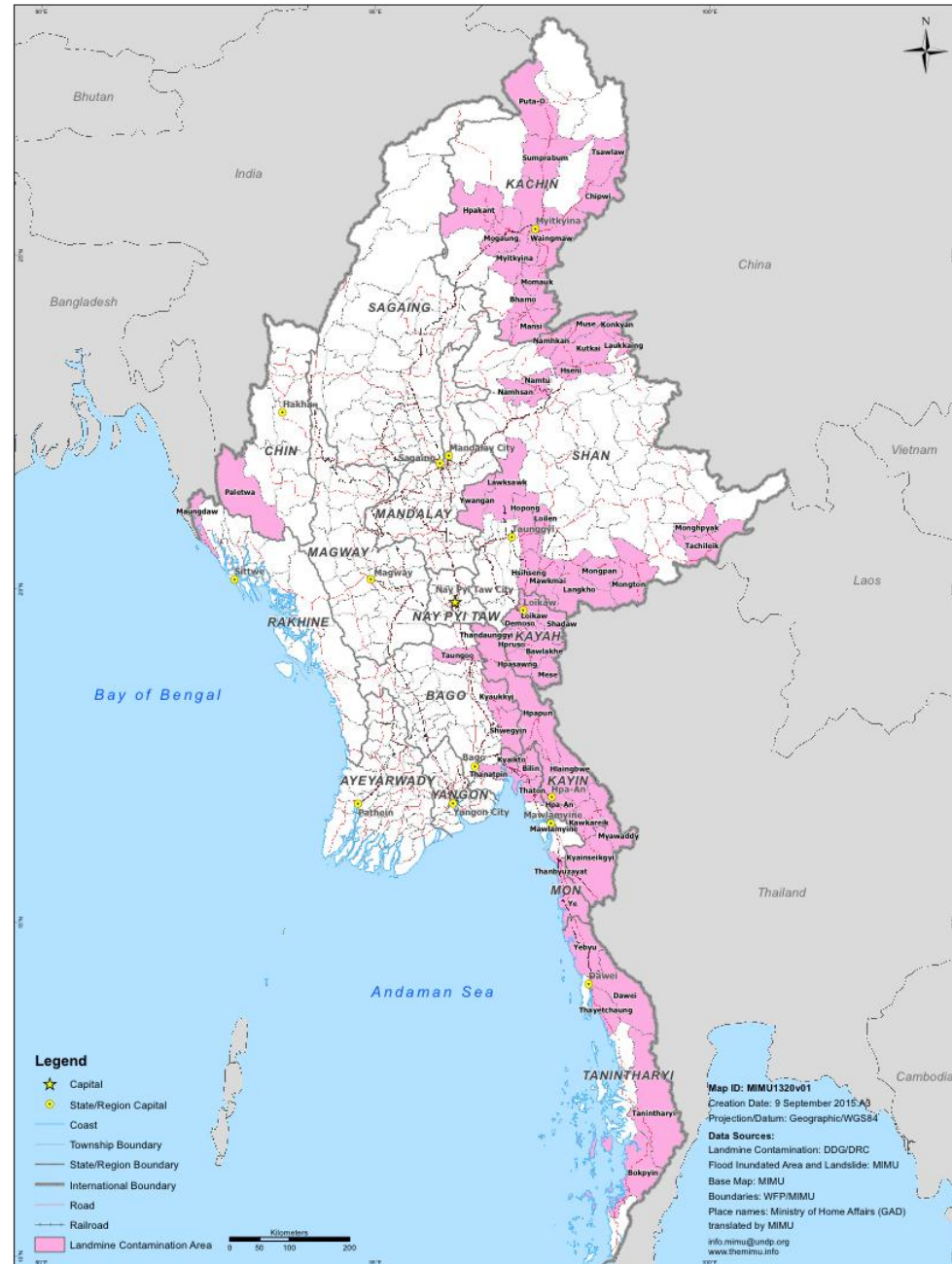
Challenges ahead





Myanmar Information Management Unit

Landmine Contamination Map



Disclaimer: The names shown and the boundaries used on this map do not imply official endorsement or acceptance by the United Nations.

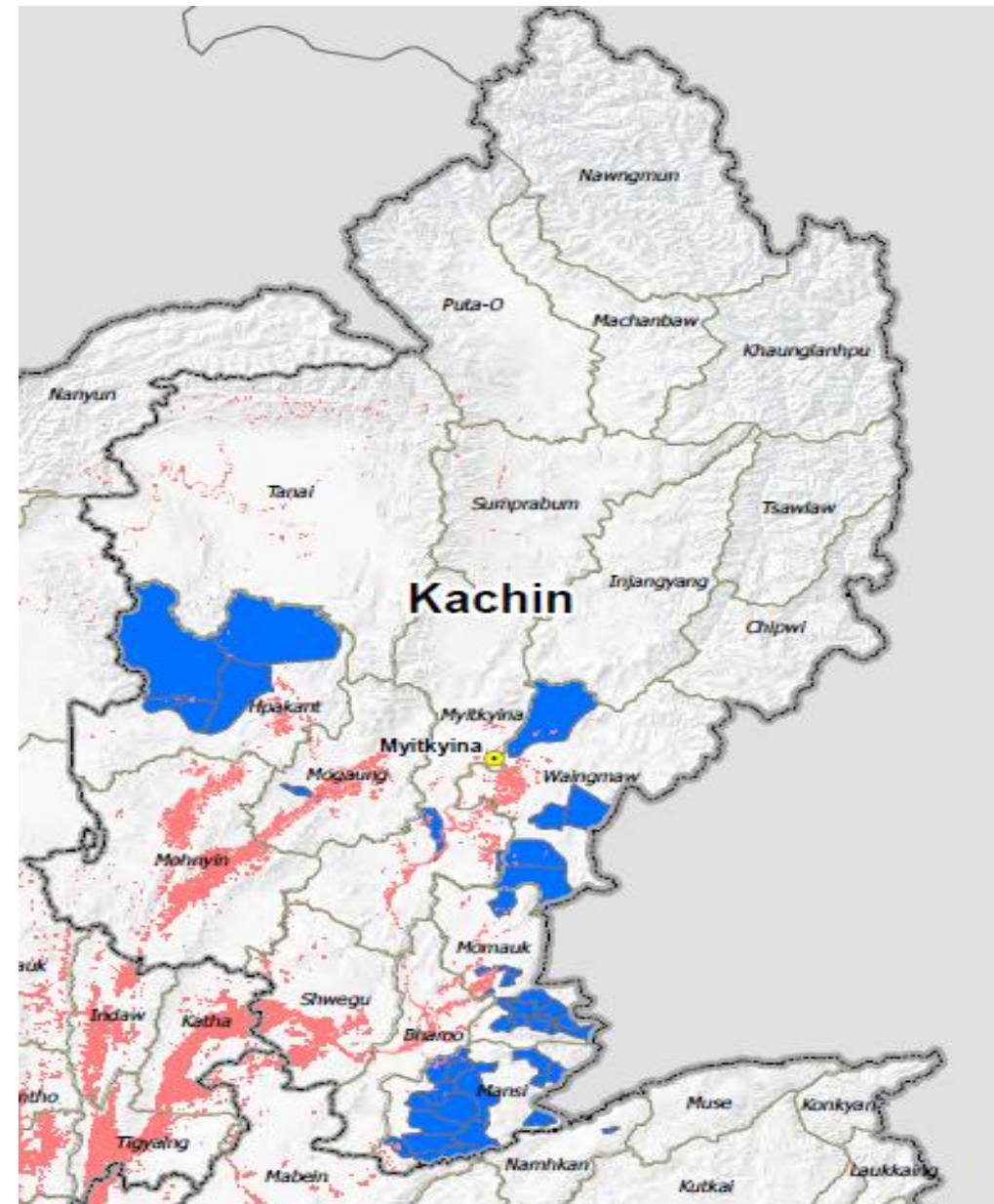
Case Study:

Kachin

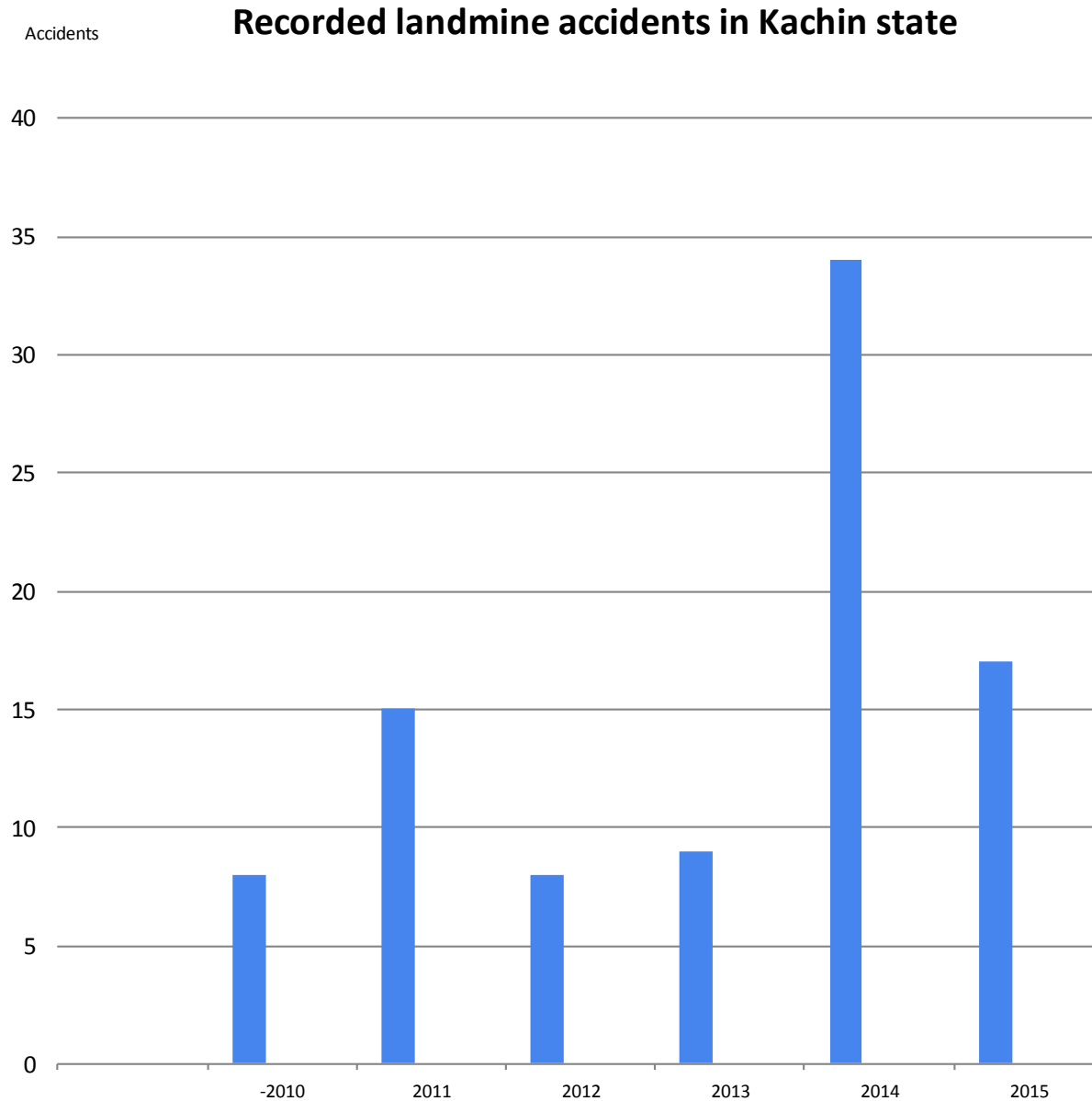
Qualitative data - collected from landmine survivors or their relatives and is voluntarily.

The data is based on data from 91 accidents and 153 victims.

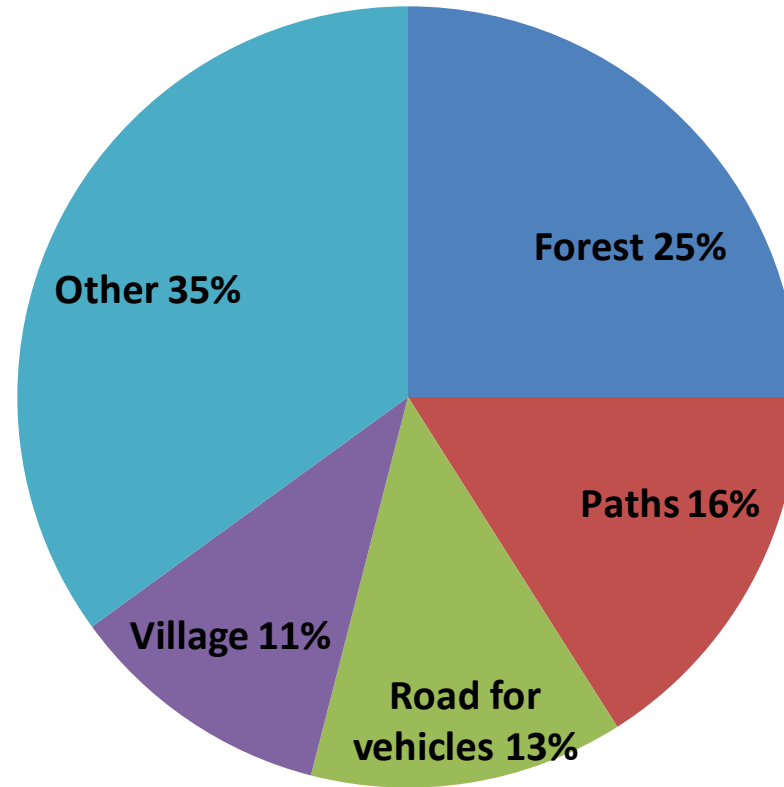
Not a complete picture but provides an indication.



Case Study: Kachin

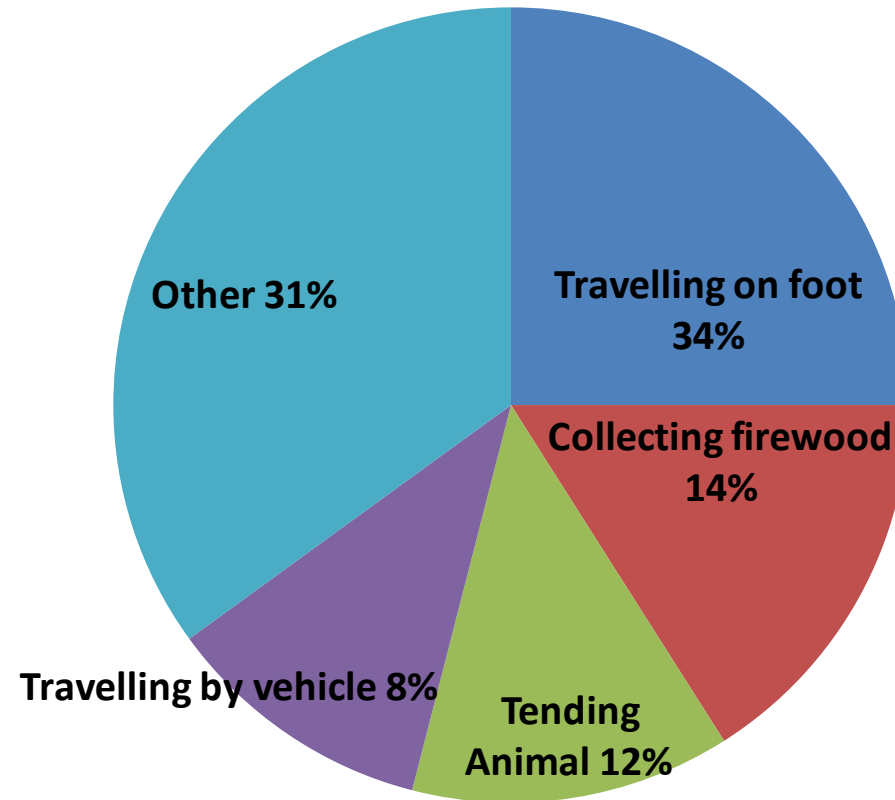


Case study - Accident data Kachin



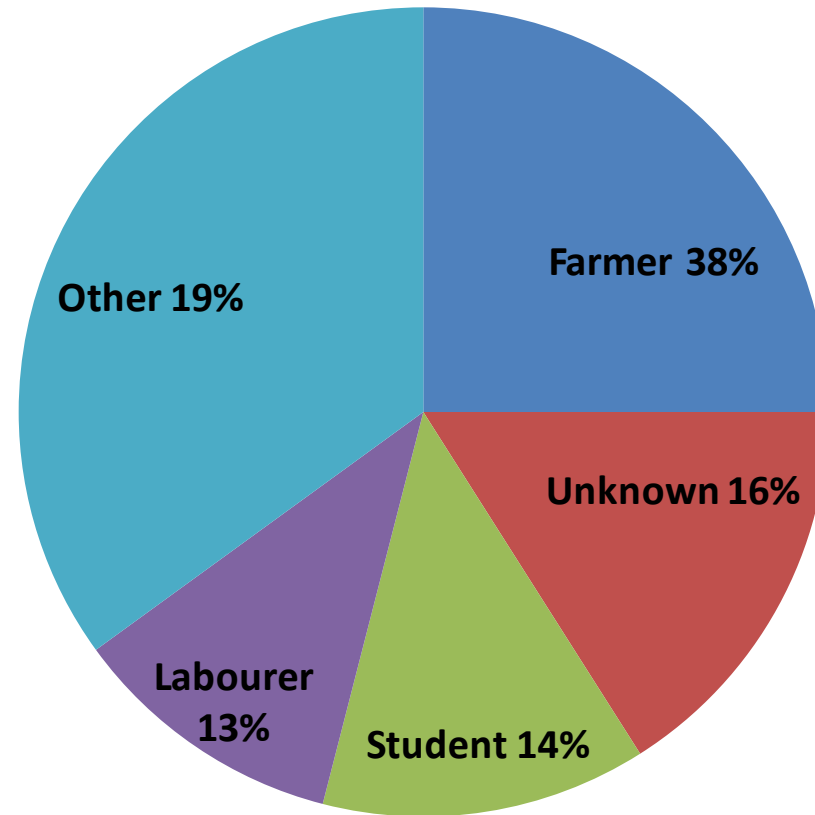
Type of area where the accident happened

Case study - Accident data Kachin



Activity at the time of the accident

Case study - Accident data Kachin



Occupation at the time of the accident

What information are we missing:

- Data on number of accidents, injuries and deaths not yet comprehensive
- Surveillance system for entire country not yet established
- More and wider study needed to be carried out on a more comprehensive and disaggregated picture of where and why accidents are happening.

A snap shot of the threat

Current information gaps

Servicing Victims through
Partnership

Integrated Protection Support

Coordination with other actors

Challenges ahead

A snap shot of the threat

Current information gaps

Servicing Victims through
Partnership

Integrated Protection Support

Coordination with other actors

Challenges ahead

Using partnerships for better outcomes:

- Coordination of efforts is key for support to National Authorities and UN
- Limited resources and geographic coverage necessitates that the various actors involved work together.
- Combining efforts through partnerships allows organisations to specialise in the given areas of expertise

Integrating Survivors Under a Protection Umbrella:

A snap shot of the threat

Current information gaps

Servicing Victims through
Partnership

Integrated Protection Support

Coordination with other actors

Challenges ahead



Coordination with National Authorities and Other national Actors

A snap shot of the threat

Current information gaps

Servicing Victims through Partnership

Integrated Protection Support

Coordination with other actors

Challenges ahead

- Key to maintain a coordinated approach with Myanmar's national and local authorities
- Important to consult with local actors in order to understand their needs and where are the greatest assistance gaps
- Working with others, such as UNICEF, ICRC, MRCS, to ensure that the needs of survivors and victims are met is important to ensure that survivors can receive assistance from the beginning (needs assessments) to the end state of physical safety, dignity, integrity, and empowerment

Future Challenges...

- Getting timely and detailed information through surveillance
- Moving towards a national model of how to integrate assistance to survivors into support structures at the various levels
- Mobilising resources for integrated support systems

A snap shot of the threat

Current information gaps

Servicing Victims through
Partnership

Integrated Protection Support

Coordination with other actors

Challenges ahead



Contact:

Tammy Hall

Danish Demining Group

Tammy.hall@drc.dk