



The presence of **landmines** has been confirmed at multiple locations, including anti-personnel mines in Mogran, Khartoum and anti-vehicle mines in Omdurman and Bahri (Details are shown in the map).



Until now, Khartoum state was considered heavily contaminated by UXO but free of landmines. The presence of landmines signifies the more complex nature of EO threats and requires the use of additional techniques and equipment to address them.



Landmines are hidden and deadly threats: often buried beneath the ground and designed to not be seen, they cause serious injury or death, if initiated.

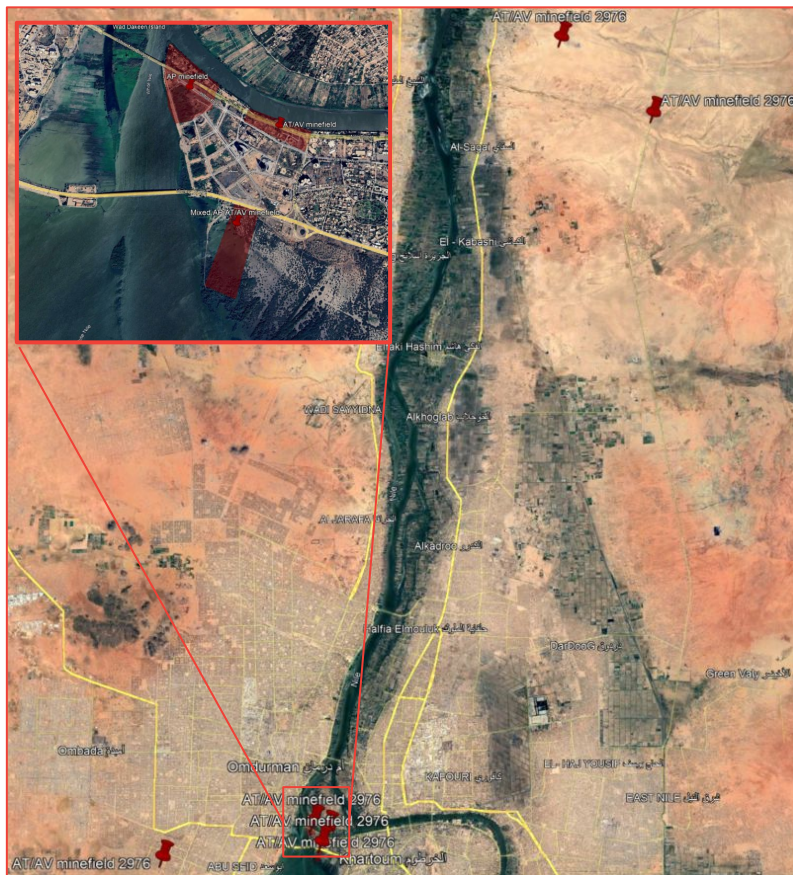


As defensive tools, mines are typically placed in or around strategic locations such as bridges, main roads, around military bases, and frontline position. However, many contaminated areas remain uncharted until a full, comprehensive survey is conducted.



A single mine incident can halt your operations, cause life-changing injuries or fatalities, and create long-lasting impacts on your mission's ability to assist vulnerable communities.

SAFE STEPS Strictly avoid the areas highlighted in the map, keeping in mind other areas still contain a significant level of UXO contamination and possibly other mine contamination. Stay on hard tarmac/concrete ground. Do not venture onto verges. Always stick to cleared, well used routes, stay alert for warning signs, and follow local guidance. Contact UNMAS for technical guidance and EO awareness before deployment. Consider, will my planned activity do harm?



The above map shows the locations where landmines were found. These areas must be avoided until clearance operations are completed. NOTE large parts of the city, including areas highlighted, are still contaminated with UXO. Extreme caution must be taken traveling into or inside the entire city.

To keep you safe, mine action partners can:

- Coordinate with UNMAS all activities into EO-affected areas
- Provide EO desk-based **assessments of routes and sites** and planning guidance
- Deliver **EO risk awareness training** to agencies to help mitigate the risks posed by EO
- Complete **site clearance** prioritised by humanitarian impact, including site handover, and provide certification.
- **Accompany humanitarians** on site visits where priority tasks are completed.
- **Partner** to enhance the mine action sector and integrate mine action into major humanitarian project activity.

See something suspicious? Report it:

Sudan National Mine Action Center **60666**



UNICEF Community Feedback Mechanism **6664**

Please contact Mine Action partners when considering assessment or return to Khartoum:

UNMAS Sudan Contact:

Goran Tomasevic,
Chief of Operations
E: gorant@unops.org
T: +249 11 001 0243

Jonathan Da Costa Nathanielsz,
Coordination and Compliance Officer
E: jonathandcn@unops.org
T: +249 110 01 0283
W/A +223 66 75 26 61



Mines and UXO are extremely dangerous, must be avoided at all times and dealt with only by professionals. They could EXPLODE and KILL you.



Thank you to our donors and implementing partners for their continued support to essential, life-saving mine action activities in Sudan.